

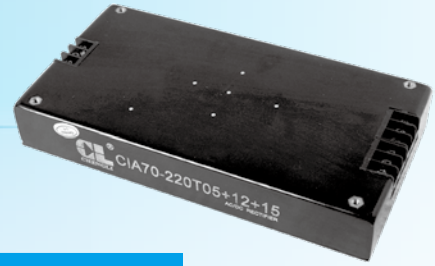
DC/DC CIF 系列

内置浪涌抑制及滤波电路

AC/DC CIA 系列

内置功率因数校正电路

50-150W



物理特性

结构尺寸: 170*88*26mm
重量: CIF:0.64Kg CIA:0.64Kg

特性

Features

- 宽电压输入范围 Wide range of input voltage
- 输入宽频噪声滤波器 Wideband noise filter of input
- 快速动态响应 Fast dynamic response
- 接线端子出线方式 Outlet terminal method
- 输入浪涌抑制电路 Surge suppression circuit of input
- 符合 UL1950、IEC950 安全规程 Comply with UL1950, IEC950 safety regulations

CIF 输入特性

CIF Input Characteristics

电压范围: (Voltage Range)	DC-DC 12Vdc(Normal)	9-18Vdc
	18Vdc(Normal)	9-36Vdc
	24Vdc(Normal)	18-36Vdc
	48Vdc(Normal)	36-72Vdc
	110Vdc(Normal)	66-160Vdc
	300Vdc(Normal)	200-400Vdc

反压保护: 应用时外接电熔丝
(Voltage Range) (External Fuse)

CIA 输入特性

CIA Input Characteristics

电压范围: (Voltage Range)	AC-DC 220VAc(Normal)	176-264VAc
--------------------------	-----------------------------	------------

输出特性

Output Characteristics

稳压精度: (Regulated Voltage Accuracy)	± 1%
电压调整率: (Line Regulation)	± 0.2%
负载调整率: (Load Regulation)	± 1%
温度变化率: (Temperature Coefficient)	± 0.02% /°C
电流限制点: (Output Current Limiting)	120% (Typ)
瞬态响应: (Transient Response)	400 μs

一般特性

General Characteristics

工作频率 (典型值): (Switching Frequency)	200 KHz
隔离电阻: (Isolation Resistance)	200 (Typ)MΩ
MTBF:	>500000 hrs

绝缘强度 (Insulation Voltage)

	DC-DC	AC-DC
输入 - 输出: (Input-Output)	> 1500 V _{DC}	> 1500 V _{AC} /1min (漏电流 < 5mA)
输入 - 外壳: (Input-Case)	> 1050 V _{DC}	> 1500 V _{AC} /1min (漏电流 < 5mA)
输出 - 外壳: (Output-Case)	> 500 V _{DC}	> 500 V _{DC} /1min

环境特性 (Environmental Characteristics)

工作壳温: (Operation Temperature)	工业品 (Industry)	-25~+85°C
	军 I (Military I)	-40~+85°C
	军 II (Military II)	-55~+85°C
存储温度: (Storage Temperature)	工业品 (Industry)	-45~+105°C
	军品 (Military)	-55~+105°C

热阻特性

Thermal Characteristics

冷却方式: (Cooling)	热阻 (Thermal Resistance)
自然风冷: (Breeze of Nature)	1.90°C /W
0.5M/S	1.59°C /W
1M/S	1.18°C /W
1.5M/S	0.86°C /W
2M/S	0.71°C /W

DC/DC CIF 系列

型号

Models

输入电压 (Vdc) Input Voltage	输入电压 (范围) Input Voltage<Range>	输出电压 (Vdc) Output Voltage	输出电流 (A) Output Current	纹波 pk-pk (mV) Ripple and noise	效率 (Typ) Efficiency	型号 Models
12	9-18	5	10	30	80%	CIF-X50-12S05
12	9-18	5	10	50	80%	CIF50-12S05
12	9-18	12	6.25	30	82%	CIF-X75-12S12
12	9-18	12	6.25	120	82%	CIF75-12S12
12	9-18	12	8.33	30	82%	CIF-X100-12S12
12	9-18	12	8.33	120	82%	CIF100-12S12
12	9-18	24	4.17	200	83%	CIF100-12S24
12	9-18	12	10	120	82%	CIF120-12S12
12	9-18	24	5	200	83%	CIF120-12S24
18	9-36	12	12.5	120	82%	CIF150-18S12
18	9-36	24	6.25	200	83%	CIF150-18S24
24	18-36	12	6.25	120	82%	CIF75-24S12
24	18-36	13.8	5.43	120	82%	CIF75-24S13.8
24	18-36	24	3.125	200	83%	CIF75-24S24
24	18-36	12	8.33	120	82%	CIF100-24S12
24	18-36	13.8	7.25	120	82%	CIF100-24S13.8
24	18-36	24	4.17	200	83%	CIF100-24S24
24	18-36	12	10	30	82%	CIF-X120-24S12
24	18-36	12	10	120	82%	CIF120-24S12
24	18-36	24	5	200	83%	CIF120-24S24
24	18-36	12	12.5	30	82%	CIF-X150-24S12
24	18-36	12	12.5	120	82%	CIF150-24S12
48	36-72	12	8.33	120	82%	CIF100-48S12
48	36-72	24	4.17	200	83%	CIF100-48S24
48	36-72	12	10	120	82%	CIF120-48S12
48	36-72	15	8	150	82%	CIF120-48S15
48	36-72	24	5	200	83%	CIF120-48S24
48	36-72	12	12.5	120	82%	CIF150-48S12
48	36-72	15	10	150	82%	CIF150-48S15
48	36-72	24	6.25	200	83%	CIF150-48S24
110	66-160	12	8.33	120	82%	CIF100-110S12
110	66-160	15	6.67	150	82%	CIF100-110S15
110	66-160	24	4.17	200	83%	CIF100-110S24
110	66-160	48	2.08	300	84%	CIF100-110S48
110	66-160	12	10	120	82%	CIF120-110S12
110	66-160	24	5	200	83%	CIF120-110S24
110	66-160	48	2.5	300	84%	CIF120-110S48
110	66-160	12	12.5	120	82%	CIF150-110S12
110	66-160	24	6.25	200	83%	CIF150-110S24
110	66-160	48	3.125	300	84%	CIF150-110S48
110	80-180	12	8.33	120	82%	CIF100-110S12
110	80-180	24	4.17	200	83%	CIF100-110S24
110	80-180	12	10	120	82%	CIF120-110S12
110	80-180	24	5	200	83%	CIF120-110S24
110	80-180	12	12.5	120	82%	CIF150-110S12
110	80-180	24	6.25	200	83%	CIF150-110S24
300	200-400	24	5	200	83%	CIF120-300S24
12	9-18	05&12	6&5.83	30&30	82%	CIF-X100-12D05&12
12	9-18	05&12	6&5.83	50&120	82%	CIF100-12D05&12
24	18-36	05&12	6&7.5	50&120	82%	CIF120-24D05&12
24	18-36	05&24	4&4.17	50&200	83%	CIF120-24D05&24
110	80-180	05&12	8&9.17	50&120	82%	CIF150-110D05&12
110	80-180	05&24	6&5	50&200	83%	CIF150-110D05&24

单
路

双
路

注：以上选型，型号中功率前面带“X”的为低纹波电源，纹波小于等于 30mV。Above selection, Model selection of the mark with an "X" is low ripple power supply, the ripple is less than 30mV.

■ 说明：仅列出典型型号，其它型号请确定功率、输入电压及输出电压后，致电我公司。

Only typical models and listed. If you need other models, please confirm the power, input voltage and output voltage, then phone us.

AC/DC CIA 系列

型号

Models

	输入电压 (Vac) Input Voltage	输入电压 (范围) Input Voltage<Range>	输出电压 (Vdc) Output Voltage	输出电流 (A) Output Current	纹波 pk-pk (mV) Ripple and noise	效率 (Typ) Efficiency	型号 Models	
单	220	176-264	05	10	30	82%	CIA-X50-220S05	
	220	176-264	05	10	50	82%	CIA50-220S05	
	220	176-264	12	4.17	30	82%	CIA-X50-220S12	
	220	176-264	12	4.17	120	82%	CIA50-220S12	
	220	176-264	24	2.08	200	83%	CIA50-220S24	
	220	176-264	05	15	30	82%	CIA-X75-220S05	
	220	176-264	05	15	50	82%	CIA75-220S05	
	220	176-264	12	6.25	30	82%	CIA-X75-220S12	
	220	176-264	12	6.25	120	82%	CIA75-220S12	
	220	176-264	24	3.13	200	83%	CIA75-220S24	
	220	176-264	12	8.33	30	82%	CIA-X100-220S12	
	220	176-264	12	8.33	120	82%	CIA100-220S12	
路	220	176-264	24	4.17	200	83%	CIA100-220S24	
	220	176-264	48	2.08	300	84%	CIA100-220S48	
	220	176-264	12	10	120	82%	CIA120-220S12	
	220	176-264	15	8	120	82%	CIA120-220S15	
	220	176-264	24	5	200	83%	CIA120-220S24	
	220	176-264	48	2.5	300	84%	CIA120-220S48	
	220	176-264	12	12.5	120	82%	CIA150-220S12	
	220	176-264	15	10	150	82%	CIA150-220S15	
	220	176-264	24	6.25	200	83%	CIA150-220S24	
	220	176-264	48	3.13	300	84%	CIA150-220S48	
	双	220	176-264	05&05	5&5	30&30	82%	CIA-X50-220D05&05
		220	176-264	05&05	5&5	50&50	82%	CIA50-220D05&05
220		176-264	05&12	3&2.92	30&30	82%	CIA-X50-220D05&12	
220		176-264	05&12	3&2.92	50&120	82%	CIA50-220D05&12	
220		176-264	05&24	3&2.5	50&200	82%	CIA75-220D05&24	
220		176-264	12&12	3&3	120&120	82%	CIA75-220D12&12	
220		176-264	05&05	10&10	50&50	82%	CIA100-220D05&05	
220		176-264	05&12	6&5.83	50&120	82%	CIA100-220D05&12	
220		176-264	05&24	4&3.33	50&200	82%	CIA100-220D05&24	
220		176-264	12&12	4.17&4.17	120&120	82%	CIA100-220D12&12	
220		176-264	05&05	12&12	50&50	82%	CIA120-220D05&05	
220		176-264	05&12	8&6.67	50&120	82%	CIA120-220D05&12	
220		176-264	05&24	4&4.17	50&200	82%	CIA120-220D05&24	
220		176-264	12&12	5&5	120&120	82%	CIA120-220D12&12	
220		176-264	12&24	3.33&3.33	120&200	82%	CIA120-220D12&24	
220		176-264	05&05	15&15	50&50	82%	CIA150-220D05&05	
220		176-264	05&12	10&8.33	50&120	82%	CIA150-220D05&12	
220		176-264	05&24	6&5	50&200	82%	CIA150-220D05&24	
220		176-264	12&12	6.25&6.25	120&120	82%	CIA150-220D12&12	
220		176-264	12&24	3.33&4.58	120&200	82%	CIA150-220D12&24	
220		176-264	24&24	3.13&3.13	200&200	84%	CIA150-220D24&24	
三		220	176-264	±12, +05	1.5/1.42/3	120/120/50	82%	CIA50-220T12+05
		220	176-264	±05, +12	2/2/2.5	50/50/120	82%	CIA50-220T05+12
		220	176-264	±05, +24	2/2/1.25	50/50/200	83%	CIA50-220T05+24
	220	176-264	±12, +05	3/3/4	120/120/50	82%	CIA100-220T12+05	
	220	176-264	±05, +12	4/4/5	50/50/120	82%	CIA100-220T05+12	
	220	176-264	±05, +24	3/3/2.92	50/50/200	83%	CIA100-220T05+24	
	220	176-264	±12, +05	5/5/6	120/120/50	82%	CIA150-220T12+05	
	220	176-264	±05, +12	6/6/7.5	50/50/120	82%	CIA150-220T05+12	
	220	176-264	±05, +24	3/3/5	50/50/200	83%	CIA150-220T05+24	
	220	176-264	±12, +15	4/4/3.6	120/120/150	83%	CIA150-220T12+15	

注: 以上选型, 型号中功率前面带“X”的为低纹波电源, 纹波小于等于 30mV。Above selection, Model selection of the mark with an "X" is low ripple power supply, the ripple is less than 30mV.

■ 说明: 仅列出典型型号, 其它型号请确定功率、输入电压及输出电压后, 致电我公司。

Only typical models and listed. If you need other models, please confirm the power, input voltage and output voltage, then phone us.